



The President's Message
By Rhonda Shippee

One doesn't have to think for long about what we will remember from the summer of 2024 – two significant flood events in the month of July. Friends and neighbors on the lake and across the entire town suffered immense damage to their homes and driveways. Most culverts on Route 111 from Morgan Center to Rt. 114 in Brighton failed, some in both floods. These failures resulted in major damage to private driveways, culverts and even bridges on the east side of the lake.

Town roads also received significant damage, and many are only just completing repairs. In addition to property damage, the flooding caused significant runoff and sediment deposits into the lake. That said, I have never been prouder of my community than during this time of difficulty. Neighbors helping neighbors with repairs and cleanup. The town road crew and many from other towns working

overtime to make roads passable again. And finally, the 90+ people who showed up on August 3rd to clean the large amount of trash and woody debris that had washed up on the public beach (see pics on page 8). Thank you to all those SLA members who joined in this effort, to Connor Contracting and Rep. Larry Labor who donated the use of their tractor and truck and to the Morgan Store who provided beverages and snacks for the workers! Two highlights of the summer were the events sponsored by our Water Quality Committee. Both the water quality workshop on July 8th and the garden tours on July 26th were successful and well attended. The topics at the water quality workshop were timely, following the significant runoff from the early July flood. Many thanks to Tracey Becken who worked hard to plan these events. Both events were co-sponsored with Echo Lake Protective Association.

This partnership also extends to the joint Lake Watershed Action Plan (LWAP) currently in the final stages of development (see update on page 4). Please

mark your calendars to attend the final plan presentation at the virtual meeting scheduled for December 4th .

Also this summer we undertook the placement of three buoys on the lake, marking the 200' distance from shore which is required by Vermont law as a no wake zone. We hope this will help motorboats and jet skis to judge this distance as they operate on the lake. We plan to add additional buoys next season. It's never too early to think about activities for next summer. If you are aware of a youth who would benefit from an SLA scholarship to attend a summer camp, please note on page 6 that in addition to the Green Mountain Conservation Camp, we have added the local Northwoods Stewardship Center camps as an option for this scholarship. Finally, a huge thank you to all those who volunteer to help with the various SLA activities. Joining a committee or becoming an invasive patroller is a great way to meet others who love the lake. Please look at our various committees and think about becoming an active SLA volunteer

Unencapsulated Styrofoam Now Prohibited in VT Public Waters

The recently enacted Act 121 prohibits the sale or use of any polystyrene (aka Styrofoam) in Vermont public waters unless it is encapsulated by a protective covering or designed to prevent the expanded polystyrene foam from disintegrating into the water. Polystyrene is a petroleum based product. It can break apart easily, forming smaller

and smaller bits that remain in the water. It cannot be recycled, is not biodegradable, can kill fish and other wildlife if ingested and is a threat to human health. In the water, this foam degrades into ever smaller particles, becoming microplastics. If you have a buoy or floats that are made of Styrofoam which do not meet these requirements, please be sure to replace it before next summer

Seymour Lake Association

PO Box 36

Morgan, Vermont 05853

www.seymourlake.org

This Newsletter is a semiannual publication of the Seymour Lake Association, a 501 (c),(3) tax exempt organization dedicated to the protection and preservation of Seymour Lake and the surrounding locality for the benefit of lake users, property owners and residents of Morgan, Vermont

Officers

Photo by Candy Moot

Directors (Term ends)

President Rhonda Shippee vtslapresident@gmail.com
 Vice President Bruce Remick
 Treasurer Jean McKenny
 Secretary Linda Buzzell

Bonnie McWain '25 Tim Buzzell '26 Michael Tule '27
 Candy Moot '25 Tom Adams '26 Charles Woods '27
 Denis Fortin '25 Bill Bilowus '26 Tracey Becken '27

Activities

Bonnie McWain, Jim McWain, Molly Bilowus, Kathy Remick

Audit

Marie Tule, Doug Jangraw

Boating

Tim Buzzell, Bonnie McWain

Dam Lake Level

Tim Buzzell, Chuck Nichols, Ron Kolar, Eric Lessing Candy Moot

Fishing

Charles Woody Woods, Bill Bilowus

Loons

Charles Woody Woods, Denis Fortin, Nancy Bowen, Eli Fortin

Maps

Charles Nichols

Milfoil

Rhonda Shippee, Beth Torpey, David Wieselmann

Membership

Tom Adams, Tim Buzzell, Gerry Cahill, Ann Torpey, Chris Blais, Bonnie McWain, Chuck Nichols, Andy Barter, Dick Morley, Jim Mitchell, Ann Stafford

Newsletter

Denis Fortin, Candy Moot, Bruce Barter

Nominating

Tim Buzzell, Bonnie McWain

Water Quality

Peggy Barter, Tracey Becken, Kit Walker, Dan Barry, Beth Torpey, Rhonda Shippee Ron Kolar, Rob Hoffman David Wieselmann, Trish Clark, Gerry Cahill, Tom Emery Andy Barter

Volunteer Invasive Patrollers (VIP)

David Wieselmann, Ray Bolduc Lee Mclendon, Candy Moot, Janet Selby, Kit Walker, Besty Walkerman, Gerry Cahill, Andy Barter, Cooper Barter, Kenni Jenness- Friere, Sylvia Geiger

Online Candy Moot, Karen Abada, Chuck Nichols, Andy Barter, Rhonda Shippee, Wendy Franklin

Seymour Lake Reclassification

Peggy Barter, Rhonda Shippee Tracey Becken, Bruce Remick

Greeters at the boat launch (2024) Bud Bergh, Bill Drake, Kim Hier Germain, Bethany Howe, Cora Kelly, Leslie Martin, Kerry Wevurski, Dean White, Cassidy Mitchell, Karla Braunesreither, Liam Torpey

Note: Underlined is committee chair, Others are Committee members

Recognition

The Newsletter is paid in part with support from VT. Department of Environmental Conservation funds



Town of Morgan www.townofmorgan.com

Selectmen: Eric Pope—Chair
 Larry Labor
 Bruce Remick

Town Clerk/Treasurer—Tammy Lee Morin
 Asst. Town Clerk—Amanda Wright

North Country School Directors: Danielle Blake-chair,
 Sean Selby, Tammy Lacourse

Zoning Officer—Beth Torpey, 802-895-3013
 Fire Warden—Bob Cain, 802-895-2727

Shoreland Protection Permitting

For questions regarding Shoreland Protection Permitting, the contact person is Laura Woods who can be reached laura.woods@vermont.gov 802-490-6100

Note That the town of Mogan now requires a shoreland permit (if needed) prior to issuing a zoning permit

The Fish of Seymour Lake

By Bill Bilowus

TROUT - Rainbow, Brown & Brook The female makes the nest and cleans the area. She will defend it from other females. She deposits between 400 to 3,000 eggs depending on her size. The male will fertilize the eggs and the female will bury them. The male will defend the eggs from all other male trout. The eggs will hatch between 30 and 90 days depending on the water temperature.

RAINBOW spawn in the brooks coming into Seymour Lake usually from March to May, while the Brown and Brook Trout spawn in the brooks usually from September to late November. Rainbows average 4 or 5 inches and grow by 4 years to be up to possibly 13 to 17 inches. The record in Vermont for Rainbows is 13 lb. 12 oz. caught by Harry Hunt in 2006 in Lake Dumore. The Browns grow to 5 to 9 inches after two years. By year four, they can be 9 to 14 inches. The record in Vermont for Brown Trout is 22lb, 2.5 oz by Barry Buker at the Sherman Reservoir in 1990. The Brook Trout grow to about 6 inches after 2 years and 8 to 12 after 4 years. The record Brook Trout caught in Vermont was a 5lb 12oz Brookie caught by Denis Harwood in 1977. The season is from the 2nd Saturday in April to October 31st & from January 1st to March 15th.

LAKE TROUT - The Lake Trout usually spawn from October to November in Lake Seymour. The female looks for boulders in the lake where water currents keep the eggs clear of silt. The males will fertilize the eggs. These fertilized eggs will sink to the bottom into protective crevices of the rocks where the water currents keep them oxygenated and silt free. A single female may produce 2,000 to 20,000 eggs depending on her size. The fertilized eggs develop and hatch into free swimming fry from February to March. Lake trout grow approximately 3 inches per year and as little as 1/2 inch per year for fish when they are over 36 inches. The season is from the 2nd Saturday in April to October 31st & from Jan 1st to March 15th. The record in Vermont is 35lb 3.2 oz caught by Shawn Dutil in Lake Willoughby in 2003.

LANDLOCKED SALMON - These salmon usually spawn in October to November

using the inlet or outlet brooks of Lake Seymour Lake The female prefers gravel areas just above or below pools in swift moving water to provide oxygenation of the eggs. The female will cover them up with gravel after making pits in the area with sand or silt. The eggs are deposited at night in a gravel pit of 4 to 12 inches. A single female deposits 600 to 700 eggs per pound of her body weight. The male swims along side the female and fertilizes the eggs by releasing milt, a milky white fluid that contains sperm. The egg incubation period averages 150 days varying with water temperatures. The eggs hatch in the Spring. The spawning landlocked salmon do not die like the Pacific Salmon. It takes up to three years for a young salmon to move into the lake from a brook. Once in the lake, smelt are their main food and some four year olds are up to 18 inches. The record in Vermont is 14lb, 6.5 oz. The season is the same as for Lake Trout.

BASS - Smallmouth and Largemouth Bass usually start spawning between April and May. The males make the nests by fanning their tails to clear out silt and other debris off the rocks. The exposed rocks are attractive to the females. After she deposits the eggs to the nest, the male fertilizes them and becomes the sole care giver for the young. The larger bass can be very aggressive around the nests. Eggs can hatch from 5 days to 5 weeks depending on the water temperature. Bass are the only fish that will eat their own fry after they get to a certain size. A one year old largemouth bass could be between 2 to 8 inches while a three year old could be 15 inches. A six year old could be 5lb or more. Their season goes from the 2nd Saturday in June until March 15th. 10 inches is the minimal keeping size and no more than five per day. The record in Vermont is 10lbs 4 oz for a Largemouth by Tony Gale in Dumore Lake in 1988 and the Smallmouth record is 6lb, 13 oz.

PERCH - Yellow Perch usually start spawning around April to May. It is normally around shore lines where eggs are deposited in long ribbons on submerged vegetation and dead branches. No nests are prepared for egg laying. Males come by and fertilize the eggs. They are not protected by the male or female. The eggs hatch in 10 to 21 days depending on the water temperature. Perch grow about 6 inches their first year, usually 7 to 9 inches by their third and fifth year. If

they get up to 10 to 13 years old, they can get up to 2 1/2 lbs. There is no closed season for Perch. There is no size limit and a 50 Perch limit per day. The largest Perch caught in Vermont was a 2 lb 2 oz by Sheldon Meaker Jr. in 1981 in Lake Champlain.

SMELT - Smelt spawn in the brooks in April and May when the ice is out of the brooks. The average age of spawning smelt is 1 to 2 years old. Females can lay upwards of 50,000 eggs depending on their size. Spawning takes place at night. Males and females will swim together in rows, each female (which are bigger than the males), are surrounded by two or more males. Sperm and eggs are then released. Fertilized eggs are adhesive and will stick to rocks, vegetation or debris. Most spawns last from 2 to 10 days. The eggs will hatch within 5 to 30 days depending on the water temperature. Hatching at 1/4 inch and translucent, they are dependent upon the brook flow to carry them to the lake. Once they get into deeper water, they will begin a long journey of avoiding hungry mouths both of fish, loons and humans.

SUCKERS - Suckers spawn from April to June. Spawning sites are usually rocky or gravel shallows in moderate currents of the brooks. Two to ten males and one female can spawn up to 40 times per hour and produce 36,000 to 139,000 fertilized adhesive eggs that are deposited by the female. The eggs will incubate in gravel and if the water temperature is not too cold, will hatch in 8 to 14 days. No nest is built nor is any parent protection given. Since they spawn around the same time as rainbow trout, the trout will gobble up some of the sucker's eggs. Some say sucker's eggs are on the Spring Menu for every trout in the brook. Others say if you have smelt eggs in the brooks, the suckers will eat some of the smelt eggs since they normally spawn at the same time. There are no daily limits on size or number of suckers that can be taken. There is an open fishing season for suckers all year long. The Red Horse record for suckers is 10lb, 5.4 oz and for the White Longnose, the State record is 6lb, 5.4 oz

Review Minimum size: Lake Trout 18", Salmon 17", No minimum Brown, Rainbow and Brook. **Only 2 of the following can be taken per day;** Brown, Rainbow, Brook, Salmon, and Lakers ☐

Echo-Seymour Lake Watershed Action Plan (LWAP)

By Tracey Becken

More than 50 people attended the Echo-Seymour Lake Watershed Action Plan (LWAP) project prioritization meeting at the Morgan Community House on August 7th. Bevin Barber-Campbell of the Orleans County Conservation District began the meeting with a recap of the LWAP, which was officially kicked off in July of 2023.

Since that time the project staff from the Memphremagog Watershed Association (MWA) and the Conservation District have completed a prodigious amount of work, culminating in identifying 94 potential projects that can reduce or eliminate the greatest threats to the lake watershed ecosystem. The goal of the meeting was to prioritize and then select 3 projects for preliminary restoration design.

Gabryel (Gabby) Gianoni from MWA gave an overview of how the assessment had progressed to this point where the projects could be prioritized. A sample of the data she presented illustrated the amount of work that had been done to date. The project called for the following:

- Stream Walks: Proposed 24.6 miles. Completed 32.4 miles. This involved over 200 separate properties and 186 stream crossings (culverts, bridges, fords).
- Town Roads, Private Roads and Driveway Assessments: Proposed 7 miles Completed: 3.9 miles of town roads, 22.7 miles of private roads and 218 private driveway assessments. 415 road segments were screened for erosion or drainage issues.
- Shoreland - 15.1 miles of lakeshore were assessed by boat with follow up on

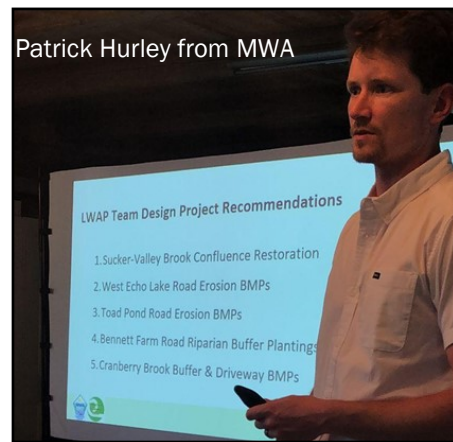
foot where warranted; 12 Lake Wise assessments completed; 7 Lake Wise awards were issued. Total potential restoration opportunities identified: 94; top proposed projects identified: 30.

Gabby explained how the projects were weighted using the project prioritization criteria. The criteria include water quality benefits, cost and feasibility, level of land-owner support, operations, maintenance and longevity and co-benefits.

Patrick Hurley, also with MWA, then presented the highest 10 priority projects based on their criteria scores. At the end, the LWAP team identified four projects, two on each lake, that they recommended for the design phase.

The top four projects are:

- Sucker and Valley Brook Confluence Restoration: a chronic problem area, this project would reduce flood risk and seasonal flooding, enhance fish habitat, enhance natural lakeshore communities and reduce phosphorus flow into Seymour Lake.
- Road Erosion on West Echo Lake Road: another chronic problem area, the project would work on creating flood resilient infrastructure, would remove major sediment and phosphorus loading into Echo Lake, and enhance fish and natural communities.
- Toad Pond Road Erosion: another chronic problem area, the latest flooding highlighted the need for improvements on this road to prevent or reduce the damage from significant rain events. This would also reduce sediment and phosphorus loading into Seymour Lake.



● Echo Lake Boat Access: this project would improve capture and filtration of stormwater runoff at the access.

The attendees all agreed on moving ahead to the design phase with these recommended projects. There was a lot of interest from the audience about the rest of the projects that make up the 94 in total. As part of the plan, each lake association will be given access to all of the projects and related information in the form of a watershed data library. They will also receive a map showing sediment and phosphorus sources, the designs of the aforementioned projects and a final report. The LWAP is set to be completed in December. A presentation of the final report and associated materials will be held virtually on December 4th from 3:30-5:00 PM. Please plan to attend this important and informative meeting via Zoom Topic: Echo-Seymour LWAP Final Plan Presentation - Public Meeting
Time: Dec 4, 2024 03:30 PM Eastern Time (US and Canada) Join Zoom Meeting
tinyurl.com/Echo-SeyLWAPFinalReport

Storm Challenges of High Lake level and Raging Streams

By Peggy Barter

Property owners on Seymour Lake were greatly affected by multiple heavy rain storms this summer, as were many other land owners in Morgan. The photos on page 8 tell some of the story. SLA's spring newsletter will include much helpful information about the mitigation of storm damage, but here are a few resources for you to think about over the winter.

Two free resources from VT's Dept. of Environmental Conservation:

☐ Vermont Bioengineering Manual – an

excellent resource for land owners to use on their own or to share with contractors you hire to work on your property. Reputable contractors will have taken the course on use of these techniques which protect your land and the lake. The manual may be ordered at; <https://dec.vermont.gov/content/bioengineering-manual-order-form>

☐ Lake Wise Info Sheets – These sheets which are useful upland as well as along lake shores are available here for you to download <https://dec.vermont.gov/>

[watershed/lakes-ponds/lakeshores-lake-wise/shoreland-best-management-practices](https://www.seymourlake.org/watershed/lakes-ponds/lakeshores-lake-wise/shoreland-best-management-practices)

Topics are numerous and include Check Dams, Water Bars and Open Top Culverts, Planning Pathways, and Driveways and Lake Roads. ☐


From the 1931 Edition of the Historian, A community Wolf Hunt, Calderburgh, and Land for Sale!

In the fall of 1838 the wolves were ravaging the sheep on Elon Hill. Upon a certain night their howling from the hill-top drew a crowd of some 200 hunters who surrounded the hill.

At a certain point on the Lake shore there was a narrow plot of land hemmed in by an almost perpendicular cliff rising sheer from the water's edge to a considerable height. To this point it was designed to drive the wolves and close up the circle. In the latter part of the day the report of firearms told that they had accomplished their design. Soon the hunters were seen rushing from the woods bearing the trophies of their hunt, 3 had been captured.

It being known, however that some had escaped and thinking it probable the beasts would return in search of their companions, a watch was kept that night. At a late hour howling was heard emanating from the same hill top. Three more were captured that night Not long after, from the sale of the skins and Government bounty, each man and boy who engaged in the raid found himself a little more than half a dollar richer for the two-days adventure□

Orleans County
Summer Homes and Farms



SEYMOUR LAKE LOOKING EAST
VERMONT'S LARGEST
[The Fish and Game Department at Montpelier assured me that Seymour is Vermont's largest lake.]

SAID TO BE $\frac{1}{2}$ FISH AND $\frac{1}{2}$ WATER

I OFFER ACREAGE, or entire 100 acres on west side of Seymour Lake, with **3000 feet** of shore line. Fine Views, Shady Woods, Spring Water, Electricity and Telephone.

Opportunity for
Large or Small Estates
at moderate cost.
On Quiet Road
GEO. E. COLBY, Greensboro, Vt.

LIST OF CAMPS AND SUMMER-COTTAGE OWNERS. (1931)

Modern camping about Lake Seymour began more than 40 years ago. Charles Bennett, now a resident of Derby Line, and C. I. Moore now of Newport, were among the first to build cottages about the lake's shores. At present there are nearly fifty summer cottages dotting the fifteen-mile shore line. Following is a list of the owners as near as we can gather, and if any are missed it is unintentional:

- Susan K. Wilson.....White River Junction
- Sarah Shields.....Groveton, N. H.
- W. S. Rossiter.....Concord, N. H.
- Arthur Perry.....Milton, Mass.
- W. H. Hatton.....Gardner, Mass.
- C. O. Morse.....Hardwick, Vt.
- Fred Robertson.....Beebe, P. Q.
- G. G. Kittridge.....Searboro, Me.
- L. K. Wilson.....West Charleston
- Ray Vinton.....New York
- Mr. and Mrs. J. P. Curry....." "
- Mary M. Daley.....Hartford, Vt.
- E. C. and Minnie Skinner.....Orleans, Vt.
- C. D. French.....Orleans, Vt.
- Fred Daggett.....Holland, Vt.
- Carl W. Robbins.....Derby Line, Vt.
- A. F. Lafoe....." "
- Earl Hackett....." "
- Charles Counter....." "
- George Holland....." "
- Clifford White....." "
- R. McLoy.....Island Pond, Vt.
- Ida Bishop....." "
- Harry Johnson....." "
- Mrs. Leon Currier....." "
- Ethel Danforth....." "
- Robert Hodgson....." "
- Roy Hull....." "
- Mrs. J. A. Jackson....." "
- D. C. Lapointe....." "
- Fred Paquette....." "
- Middie White....." "
- Perley Brown....." "
- Leo Farrell....." "
- H. E. Rice....." "
- Lewis Brothers.....Morgan, Vt.
- Mr. and Mrs. G. A. Buzzell.....Newport, Vt.
- R. E. Martin....." "
- Dorothy Brown....." "
- Arabelle I. Parker....." "
- Walter Kipp, Mrs. Cyrus Miller, L. J. Henderson, address not given

BOYS' CAMPS

- "Camp Winape,".....R. P. Wilson, Mgr., Buffalo, N. Y
- "Camp Wayeeses".....C. A. Hill, Mgr., West Hartford, Ct.

Did You Know?

Morgan was originally chartered by the name of Calderburgh, dated Nov.6, 1780, probably by reason of the importance of John Calders, one of the

grantees. A short time later, however, the town's name was changed to Morgan, in honor Of John Morgan, one of the original grantees of whom the first settlers purchased land□

SLA Board of directors



L-R Bruce Remick, Linda Buzzell, Bonnie McWain, Candy Moot, Tracey Becken, Jean McKenny, Tom Adams, Tim Buzzell, Denis Fortin, Mike Tule, Bill Bilowus, Rhonda Shippee Missing; Charles (Woody) Woods

More Lake Wise Awards for Seymour Lake By Tracey Becken

Little does more to protect and improve the health and ecological integrity of Seymour Lake than a property owner's participation in the Lake Wise program. Eight Seymour Lake properties earned Lake Wise awards in 2024. Lake Wise awards are given by the State to owners who manage their properties in a manner that helps to protect the water quality of the lake. Seymour now has 66 properties that have the Lake Wise Award.

The 2024 awardees are;
Karen and Hamid Abada
Jane and Dan Bennett
David and Nancy Bullock
Tim and Linda Buzzell
Denis and Eli Fortin
Paul Frascioa
Nicholas and Zea Larochelle
Tina and Scott Schissel

Thank you for being such great stewards of Seymour Lake ☐



Tim & Linda Buzzell

Youth Camp Scholarship Update By Linda Buzzell

We will be sponsoring two campers again for next summer. This year families will have two options. First is the five day, overnight Green Mountain Conservation Camps (GMCC) at either Lake Bomoseen or Buck Lake for both boys and girls ages 12-15. And second,

we have added the Northwoods Summer Camp in East Charleston, VT, ages 3-16.

It is SLA's hope that by attending, our kids would develop a caring attitude about Vermont's fish and wildlife, gain confidence and the love of the outdoors and bring that respect back to Seymour Lake as they grow into young adults. Applications for Northwoods starts in

December and GMCC starts in February. If you know of a child who might be interested, please contact Linda Buzzell before you register your child, giving her your child's name, age and address. She will email the signed sponsorship form to you which must be attached to the application Her contact information is; Linda Buzzell ☐ 603-443-1666 (cell) or email; tbuzzell47@gmail.com ☐

Another Successful Summer Social by Rhonda Shippee

On August 3rd, over 90 SLA members gathered at the classic Camp Winape dining hall to share appetizers, beverages and good company. Much conversation was shared regarding the recent flooding in both early and late July. Many attending had participated in the beach cleanup (see more on page 8) earlier in the day. On a happier note, the Board was able to present Bruce Barter with a gift recognizing his 12 years on the

SLA Board and as administrator of the membership committee. Bruce has stepped away from his SLA duties to enjoy more free time with his family at his beloved cottage on Barter Lane. New Board member, Michael Tule, was introduced. Tracey Becken will also join the board but was unable to attend. Learn more about Michael and Tracey below. Thanks again to the Kolar family for hosting this annual event ☐



Bruce and Rhonda

Meet our New Board Members

Tracey Becken

Tracey has lived on Seymour Lake since 2004 with her husband, Bill, and various dogs ..the current being Razzle. They live in Austin ,TX in the winter. After Tracey saw a Cyanobacteria bloom on Memphremagog, she got very interested in water quality and joined the Water Quality Committee for

SLA soon after. Her goal is to get a majority of the properties on Seymour Lake to be Lake Wise, and thinks doing so would be the most effective way to make sure our water quality remains as good as possible ☐

Michael Tule

Marie and Mike are relatively recent Seymour camp-owners, starting in 2017, but they have been in the area for quite some time. Marie is a Northeast Kingdom native and learned to swim at Seymour, near where her aunt and uncle owned a camp. They live in Concord, New Hampshire and we enjoy

coming to Seymour year round, to visit family and connect with old and new friends around the lake. Mike is honored to serve with such a dedicated group, and hope his service on the Board will help preserve and protect this very special place ☐



Tracey, Razzle, & Bill



Mike & Marie

The Fraleighs 5 Generations in Morgan

By Denis Fortin and Amanda Arnold

John Fraleigh has been on Seymour Lake and in the Morgan area since 1931, (He was born in 1931). He has meticulously kept records of their property's history located on Wayeeses Dr. since 1833, when Orson S Grow sold (at the time) a larger property to Nathaniel S. Clark for \$320. John's Dad, Percy, bought the property in 1931, while it was part of the Johnson farm as were some of the neighboring properties like the Jenness home. The Spauldings had bought some of the adjoining property two years earlier.

Percy and Lucy Fraleigh lived in Burlington, VT, after Percy finished up in the army. John went to college in Massachusetts and eventually John and Eleanor met at a church choir practice in Woodstock, and later married there. John eventually started working at the University of Rhode Island with a short time at Dartmouth College before then.

John and Eleanor raised four children and would split their time between Narragansett, RI and Morgan, hauling the kids up for a summer of fun, and camping. Those four children eventually had the family grow to add 12 grandkids and five great-grandkids.

I fondly remember the Fraleighs as neighbors and friends. It seems summer officially started once John had finished his teaching semester and he and Eleanor would return

to Morgan. With their return would come the two granddaughters, Amanda and Lyn, (more would follow) which for the next three months would be intertwined with my kids and the Bolasevich children. Eleanor and their puppy Missy, would wander over to Spaulding Road to check in on her social butterflies. John would take the quieter route with a walk on Wayeese almost every night. By August, the countdown to final campfires, swims and tubing were coming to an end. The children dealt with it by knowing they would all be back together next summer. Eleanor passed in 2020, during those horrible days of Covid.

John's daughter, Joan, her daughter Amanda, her husband, Ed, and their daughter, Ashley, moved from RI to care for John, maintain the properties and continue to family tradition on the shores of Seymour Lake. John's parents are also buried on the property. A special thanks to Amanda for gathering all the papers and pictures, truly a history lesson!



Percy and Lucy

L-R: great granddaughter, Ashley, granddaughter, Amanda, her husband, Ed Ludvigsen, and John and his daughter, Joan



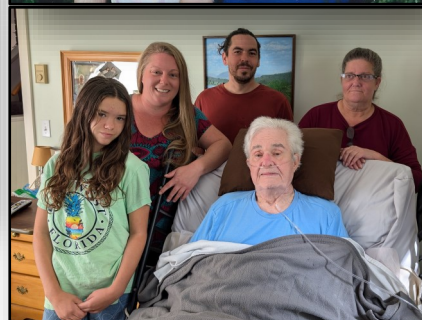
John in Seymour Lake 1933



The Fraleigh cabin 1959



John & Eleanor 1995



Recognize these Morgan bodies of water?

Answer on the back page!



A 2nd possible Loon Nest?

When Bob and Mary Lou Steenrod returned to their camp on Cranberry Lane in the spring they found a couple of very welcome guests, a pair of loons had decided to build their dream home on a ...sandbar!

Unfortunately, the heavy rains in July caused the Nest to flood and the owners

to abandon ship.

We are currently building our new neighbors a floating platform nest and hope they decide this is their forever home to raise some loon chicks.

SLA would like to thank the Steenrods and all the abutting neighbors for their patience and understanding.



A Storm, a Sign And a Call for Help!



Photo Credits Matt & Rhonda Shippee, Jim Mitchell, Christina Malanga, Jean McKenny, Candy Moot, Bruce & Kathy Remick, Denis Fortin, Peggy Barter
Private road sign by Linda Broadwater

The Boat Access Is Back!

Water bodies on Page 7, left Toad Pond, right Mud Pond



Thank You to the following SLA members for your support in 2024

*Hamid & Karen Abada	David & Dawn Chartier	Doug & Judy Gimler
*Tom & Cindy Adams	*Patricia K. Clark	Alfred T. Gioia, Jr.
Adams Family	Mike & Jan Clarke	Krista Girty
Sue & Frank Antonelli	*John Clausen	Chris & Cindy Gobillot
Dawn & Elwood Arnold	John & Aelish Clifford	Peter Goodell
Rob & Elizabeth Atkocaitis	Terry M. & Waneta H. Clifford	Lil Govoni
*Dave & Meredith Augustoni	Felix Coe	Ken & Linda Graf
*Shawn & Kathryn Austin	*Thomas & Kathryn Colby	Mary Graham
Steve Avery	Thomas & Shirley Coneys	Steven & Ann Gratton
Bethany & Ryan Ayer	Michael Conley	Jessica & Michael Green
Luke & Donna Badaracco	Sara Connolly	John K. Greene
Riley Barter	*Stephen & Janet Connor	Wayne & Barbara Gunter
*Dan & Carol Barry	*Michael & Joanne Connor	Debora Hadley
*Peggy & Bruce Barter	Anita Cook	Dean & Erika Hamel
Andrew Barter	*John & Deborah Cowan	Linda Hansen
Donna & Bill Benito	Dick Curran	Liz & Jason Harty
*Jane & Dan Bennett	Rich & Barb Dauphin	William & Linda Hatton
Charlene & Tom Bentien	Bryan & Susan Davis	Jeff & Susan Haubrich
Elizabeth Bernhardt	Bert & Katrina DeLaBruere	Bill Heanue
Roland J. Besaw	Jonathan DeMichael	*Bob & Linda Henker
Corinne & Etienne Bilodeau	*Michael Denning & Hazel Carby	Tom & Patti Hill
Bill & Molly Bilowus	Elizabeth Denning	Stephen & Michelle Hodgdon
*Chris Blais	*Linda Dennis	*Rob Hofman & Kit Walker
Kip & Kathleen Blindow	David & Sylvia Detscher	Bill & Jan Hogan
David Blittersdorf	Tony & Kathy DiBari	Elaine Holden
Sue, Tom, Amy & Scott Bolasevich	Rick & Carol Dineley	Mildred Holland
Ray & Peggy Bolduc	*Tracey Becken & William Drake	Jason & Bethany Howe
Ed & Barbara Borden	Ann & Ed Duckless	Jill & Conrad Huffstutlar
Joe & Kim Borges	Joan Dumoulin	Bruce & Anita Humphrey
Sue Botros & Family	Skip & Jan Durfey	*Helen Irwin
Nancy Bowen	Randy & Laurie Durivage	Connie & Richard Isabelle
Matthew, Allison & Maryann Boyden	*Mike & Kathy Eastman	Frederick E. Jackson
David & Joan Briggs	Fred & Carol Edgerley	Bill & Heather Jacobs
*Ernest & Linda Broadwater	Rich Eldred	Philip & Ellen Jaeger
Jacquelyn Brown	Michael & Linda Emery	James Magoon Family
Elisabeth Brown	Tom & Sandy Emery	*Douglas & Debra Jangraw
Harley & Wanda Brown	Tim & Ellen Emery	Judith H. Jarvis
Stuart & Laura Brush	Alan & Anne Epstein	Krystal Jenness
*Nancy & David Bullock	Claudia Epstein	William Jenney
Peter & Emily Bullock	Charles & Alexandria Evans	*Ted Jewett
William & Karen Burgess	Steve & Claire Eyler	Matt & Jackie Jewett
Margo Burns	Sleeper Family	James & Sharlyn Jordan
Ginny Bushee	Wayne & Kathy Fifield	Brian Judd
Caroline V. Busta	Chris Files	Scott A. Judd
*Tim & Linda Buzzell	Jennifer Fiscaletti	Karl & Carol Kaessler
Jerry & Linda Buzzell	Susan Fish	Robert & Rebekah Karp
Ken & Karen Buzzell	Scott & Samantha Fletcher	James Kaufmann
Gerry & Steve Cahill	Mike Foley	*Mary & Rich Kecskemeti
Robert & Laurie Cain	Dan Foley	*Timothy & Lynne Keefe
Michael & Joanne Callinan	*Denis & Eli Fortin	Kerry & Laurice Keegan
David S. & Tracy L. Calvert	John Fraleigh Family	*Jim & Charlotte Kenney
Rick & Jane Cameron	Alan & Wendy Franklin	Brian & Debi Kerr
Francine Canton-Bailey	Dolores Frascoia	Nancy & Larry Kilinski
Robert & Carole Cargill	Al & Laura Frascoia	Kilroe Family
Phil & Marie Cargill	*Paul Frascoia	Lisa & Kevin Kincaid
Jack & Linda Carroll	Fraser/Turner Family	Richard Kingston
John & Shelley Carter	Sylvia & Robert (Sparky) Geiger	Jane E. & John D. Kipp
John & Christine Carter	John & Ruth Genco	Chris & Virginia Kittell
Brian & Patricia Carter	*Barbara Gildersleeve	*Ron & Janet Kolar
Tim & Victoria Cerny	Nancy McWain Gilmond	

***Indicates those SLA members who have received a Lake Wise award. If you note a mistake on the data, please contact Tracey Becken at slalakewise@gmail.com**

*Eric & Megan Kolar	Charles & Julie Norton	Halle Sills
Alan & Jenie Kolar	Fredric & Joyce Oeschger	Fabian & Don Smith
Allison & John Kulaga	Steven & Lois Osetek	*Mark & Jennifer Snyder
Larry & Pauline Labor	Steven Palfreyman	Laurel Sprengelmeyer
Ronald W. & Joanne M. LaBrecque	Robert & Debra Partridge	Ann Stafford
Hans Laggis	Richard A. Patukonis	Ann Stannard
Julie M. Laplume	The Peabody Family	*Bob & Mary Lou Steenrod
*Zea & Nicholas Larochelle	*Arliene Pearson	Michael & Debi Stevens
Christine LaRocque	Donna Pearsons	Peter Stockard
Kimberley Lathrop	Mrs. Charlotte Perkins	Dean & Joanne Stratton
Trisha McWain Lawson	Robert Peters	Katie & Charles Swabey
Anthony & Kathy Lazzara	Rebecca Boyle Peterson	Sue Swenson
Carol G. Lerner	Heather & Scott Petit	Barry & Lyndsay Sykes
*Rhealene & Erik Lessing	Sandra & Jack Philbrick	Justin Taft Family
*Elizabeth & John Levey	Frank & Mary Pinard	Erin Tefft
Coren, Shun & Leanna Liang	Roberto Silva Pinheiro	Barry & Paula Thibodeau
Stephanie Limoge	Barbara Pollex	*The Thomas Family
*Beverly Loomis	*Robin & Mary Poole	Richard Tobia
*Bruce & Karen MacDonald	Eric & Rachel Pope	Ann Torpey
Norman & Kathie MacLeod	Bonnie & Dave Potter	Beth Torpey
Nathan Maez	Jim & Mary Ann Pratt	Kevin & Lisa Torpey
John & Deb Magnus	Stephen & Gail Quigg	*John & Laurie Traficonte
Joseph & Jane Malgeri	Bill & Judy Reed	*Mike & Dale Trombly
Maya & Edward Manley	Joan & Tim Reilly	Heidi M. Trombly
Barbara Mason	Kathy & Bruce Remick	Jeness Trust
Marilyn Maxwell	Jackie & Worthy Reynolds	Bill & Tara Tubb
*Beverly May	Patti & Steve Ricker	Michael & Marie Tule
Robert McCarthy	Spensley Rickert	Pauline Turcotte
Ann McCarthy	James & Carolyn Riley	Brian & Emily Turk
Patrick & Judith McCarthy	The Robbins Family	Donald & Stacey Tynion
Rich & Sheena McClain	Edward & Jeanette Roke	Virginia & Dennis Ullery
Meghan & Nick McClure	Mike & Tracey Rossi	Roy & Joan Van Wyck
Laura & Rod McClay	Steve & Stephanie Rowe	Neal & Alice Van Wyck
Maureen McGuire	Mark & Paula Rowse	Tori Venton
*Jean McKenny	Linda Rowse	Tom & Amy Wagner
Ian McKenny	Patricia Russell	Betsy Walkerman
Derek S. McKenny	Dennis & Deb Rustay	Judi Waterman
Lee & John McLendon	Maurice & Luly Samuels	Tom & Cindy Way
James & Bonnie McWain	Stella Samuels	Peter Wenk
Lyman & Sue McWain	Les & Jennifer Samuels	Preston Whitcomb
Kevin & Shay McWain	Benjy Samuels	Brenda & Gilbert Wierschke
Jeannette & Jim Mitchell	Joan Sanborn	Joyce Webster Wieselmann
Susan & Leo Moeykens	David & Patricia Sanders	David Wieselmann
Robert John Molleur	Ken & Mary Beth Sartorelli	Vicky & Mike Williams
Patrice Molloy	*Scott & Christina Schissel	Lucy Willoughby
Mark & Loren Montgomery	Dave & Priscilla Schulz	Rodney M. Wood
Doug & Jill Moore	Dana Seguin	Charles & Missy Woods
Candy Moot	*Homer & Janet Selby	Wendy Woodward
Ian & Emily Moreau	Sean & Tara Selby	Bill & Joanne Worth
Richard & Patty Morley	Dean & Miranda Selby	Gregg & Anne Worth
James Morris	Loraine Seronick	Wayne & Judy Wyckoff
Peter & Cheryl Morse	Tracey & Larry Shadday	Heather & Robert Zeagman
Irene Murphy	Brad & Bonnie & Jonathan Shattuck	Carl L. Zettlemoyer
Thomas Murray	Betty Faynor Shepherd	SLA is grateful to also have received
Deborah Newell-Robinson	Travis Shine	memorial donations in memory of
David Nichols	*Matthew & Rhonda Shippee	William Bailey
Chris Nicotera & Heather Webster	Adam Shippee	Ron Frascoia
Eric & Melanie Nitsch	Mark & Amy Sills	Byron Fish
Bryan & Peggy Nolan	Hogan Sills	