

# NORTHWOODS STEWARDSHIP CENTER

*connecting people and nature through research, education, and action*

The NorthWoods Stewardship Center is located in East Charleston Vermont within a 1,500 acre forested tract owned and managed by the Center. This tract is largely protected by conservation easements and has been managed for public recreation, scientific research, education, and sustainable forestry since 1989.

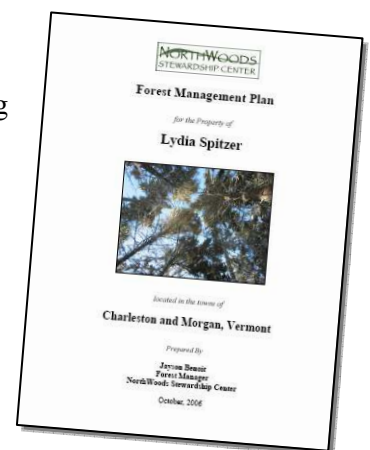
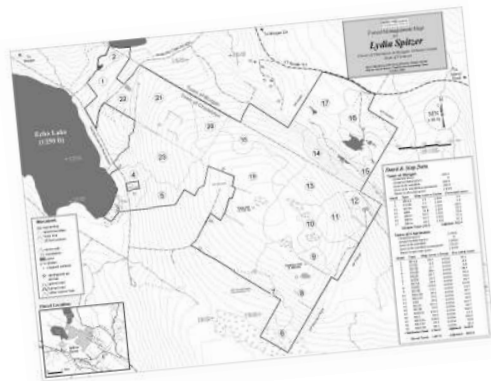
As forest caretakers ourselves, we know that landowners are most curious and passionate about their own lands. Through landowner assistance, we strive to cultivate this interest and to create a pattern of better land management across the region. Below is a sample of the services that we provide to landowners. Most of these require a basic fee to cover staff time and expenses, though some cost share opportunities may be available. For more information about the services listed below or costs, contact Jayson Benoit at 802-723-6551 x113 or [Jayson@northwoodscenter.org](mailto:Jayson@northwoodscenter.org). References available upon request.

## Landowner Services

**Free Initial Consultation-** *Our staff will visit the site, meet with the landowner, and provide initial feedback about the property and management options - based on landowner goals. Donations are appreciated for mileage and time over the initial hour.*

### **Land Management Plans**

Whether for enrollment into Vermont's Current Use Program or simply as a guiding document for a landowner, management plans are a smart place to begin. Our staff can provide everything needed for a complete plan (or enrollment in Current Use) including; property inventory, maps, assistance with enrollment paperwork, and a final management plan. Cost varies depending upon parcel size and the information desired, but we are happy to provide a free estimate based upon your specific goals and ownership. In the case of Current Use plans, the cost is generally recovered within 1-2 years through property tax savings alone. Federal cost share money may be available to cover most of the cost of developing a management plan.



### **Forestry Services**

Depending upon staff availability, we can prepare and manage timber harvests and other management operations including; trail layout, timber marking, coordinating loggers and truckers, and product marketing. Our goal is to assist landowners who value preserving the long-term ecological health of their forest while managing for recreation, wildlife habitat, income, or other benefits.

### **Other Services Available**

*Note: Costs vary depending on the time, number of staff, and equipment required. Inquire for more details.*

- GPS/GIS mapping of trails or other features
- Ecological Inventories
- Land-use history research
- Natural community mapping
- Tree planting for riparian buffers
- Timber Stand Improvement
- Apple tree release/ pruning
- Invasive plant removal
- Wildlife habitat improvement
- Trail building/ maintenance